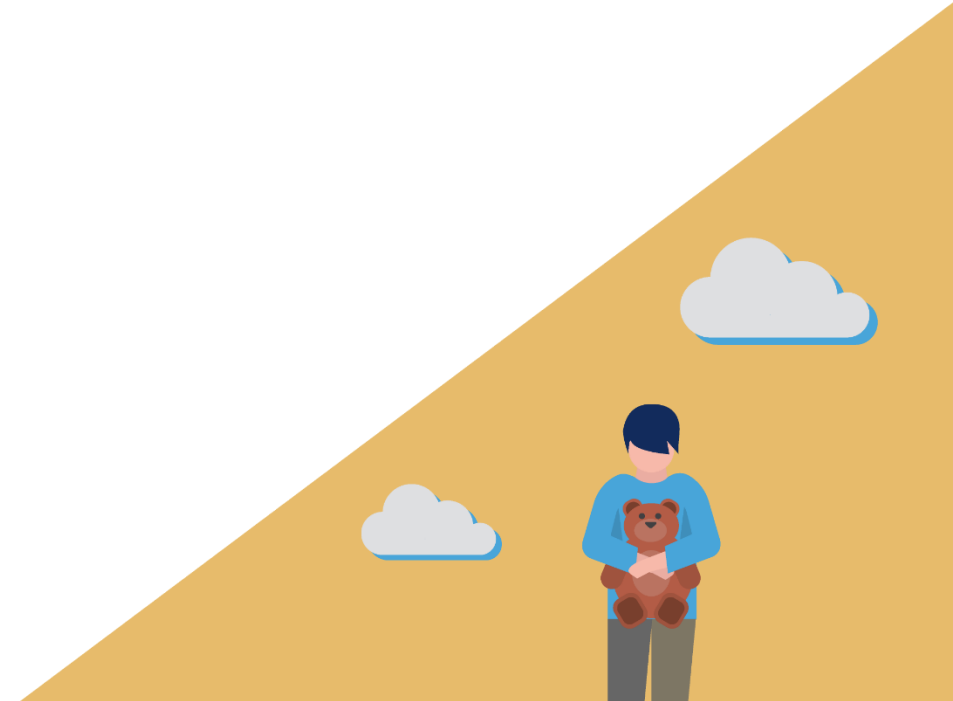


OPERATION ENCOMPASS BRIEFING PACK

 OPERATION
ENCOMPASS

WHAT IS OPERATION ENCOMPASS?

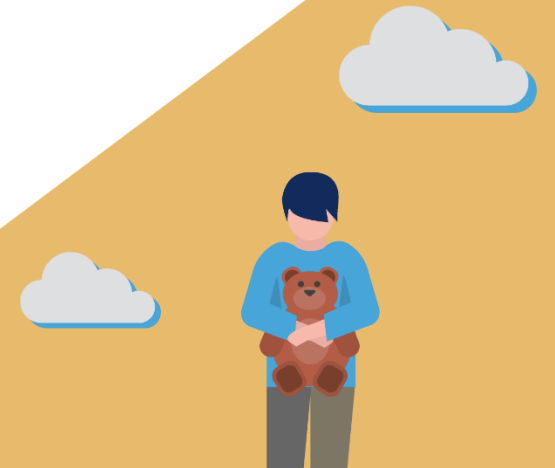
Operation Encompass is a police and education early intervention safeguarding partnership enabling support for children and young people who are experiencing domestic abuse.



DOMESTIC ABUSE

The government definition of domestic violence is...

Any incident or pattern of incidents of controlling, coercive or threatening behaviour, violence or abuse between those aged 16 or over who are or have been, intimate partners or family members regardless of gender or sexuality.



LOCAL CONTEXT

Children(Guernsey and Alderney) Law 2008 **"The Welfare of the Child is Paramount"**

Early Year Quality Standards Framework (for preschools & Day Nurseries 2018 & for Childminders 2021)

1:13

Early Years Providers are part of Operation Encompass. This is a Police and education early intervention safeguarding partnership which supports children and young people who experience domestic abuse. Operation Encompass means that the Police will share information about domestic abuse incidents with the Named Safeguarding Lead (NSL) or Deputy Safeguarding Lead (DSL) **prior** to the start of the next weekday when they have been called to a domestic incident. Information is stored in line with all other confidential safeguarding and child protection information.



LOCAL CONTEXT - DATA

- The Guernsey Police attend around 700 incidents of domestic abuse each year (average 13 incidents per week).
- In 2019, children were living in 47% of the households where the Police attended incidents.
- 236 children were referred to MASH due to domestic abuse in 2019 (17% of all referrals)
- 80 children were placed on the child protection register as a result of domestic abuse in 2019.
- As domestic abuse is heavily underreported, it is estimated that in 2019 there were 800 local children living with domestic abuse.



LOCAL CONTEXT - DATA

Safer's 'KIDVA' Service supported 101 children in 2019 and 126 in 2020. Children's Services will have worked with some of the children referred to MASH and on to its other services, but there are likely to be significant numbers of children who are currently receiving little or no support.

This is why support from staff in schools, their understanding of domestic abuse and professional curiosity when something just doesn't seem right with a child or family is so important.



Kids Independent Domestic Violence Advisor (KIDVA)

2 full time x KIDVA's employed by Safer, Guernsey's domestic abuse charity.

Purpose of the KIDVA service: to address the safety of children and young people aged 4 to 17 years who are considered to be at **high risk of harm because of domestic abuse**. High risk of harm means that they are at risk of suffering significant injury or lethality.

All the children and young people KIDVA's work with have been abused or witnessed abuse within the family home or are being abused within their own intimate relationships.



WHAT CHILDREN MAY EXPERIENCE

- Exposure to domestic abuse can have a serious, long-lasting emotional and psychological impact on children.
- A child who is anxious and dysregulated, in a persistent state of alarm, is a child who cannot learn. A child could arrive at school in a high state of anxiety about what they may have experienced (seen or heard) the night before. This could include, but is not limited to, any of the following:

Other family members being hurt or intimidated: abuse of siblings and/or pets

Destruction of property and belongings

Drug/alcohol misuse

Overhearing violent incidents

Forced participation in the abuse and degradation of their parent

ADVERSE CHILDHOOD EXPERIENCES

- ACEs are stressful or traumatic experiences that can have a huge impact on children and young people throughout their lives.
- Childhood adversity can create harmful levels of stress which impact healthy brain development. This can result in long-term effects on learning, behaviour and health.
- Domestic abuse is classed as an ACE. Individuals with ACEs reported lower childhood personal resources through which to develop resilience.

Here are a few ways people can develop resilience:

**Positive
relationships**

**Community
support**

**Cultural
connections**

**Personal
skills**

What Operation Encompass will mean for schools and early years settings

- When the police attend an incident involving domestic abuse they will record the names, dates of birth and school/pre-school of any child in the house.
- **Prior to the start of the school day, the Key Adult will be informed by the police that a domestic incident has happened overnight or during the weekend to one of our families.**
- **The Key Adult will record the incident and will inform staff on a need to know basis about that incident.**

Staff will be ready to meet and greet that child or children who need our help and support. We will help to get that family through a very traumatic time without judgement.

Data Protection and Information Sharing

- Data has been collected for the purposes of ‘protection of life and property’ / safeguarding under the auspices of the Data Protection (Bailiwick of Guernsey) Law, 2017. Where an arrest is made or other action taken it is for a Law Enforcement purpose (the prevention and investigation of a criminal offence) and the Data Protection (Law Enforcement and related Matters) (Bailiwick of Guernsey) Ordinance, 2018 applies.
- When processing under the Law, relevant data can be shared with schools on the basis of schedule 2 Condition 8 of the Law which allows data processing to comply with a duty conferred on BLE by an Enactment. In this case the Children’s Law.



Data Protection and Information Sharing

- S23 (1) (a)(i) of the Children (Guernsey and Alderney) Law, 2009 identifies that a child is in need if he, or his family, requires the provision of additional services to enable him to achieve or maintain a reasonable standard of health and development. Presence at a domestic incident, and the subsequent sharing of relevant information with school allows for them to identify additional care needs.
- S24 outlines that it is the duty of the States to provide services to any child in need and S27 permits the sharing of information for any duty conferred by the Children's Law. Both the collection and then subsequent sharing of data are compatible as a safeguarding purpose exists throughout and as such the purpose limitation principle is satisfied.



CURRICULUM - TAKING A REFLECTIVE APPROACH

- Consider if anything has happened that day/week which would impact on a child/the class in the session?
Has anything happened that needs to be explored in the session?
- The teacher should feel comfortable with the activity and session content, and know that it is appropriate for the children at this point in time.
- The teacher should consider what the children will do and how they will feel after the session, and observe and monitor in the setting to assess the impact of the session.
- Consider ending sessions with something that is calming and reflective, e.g. a mindfulness activity.



REMEMBER...

The information from Operation Encompass enables you to change...

“ Ensure each child knows who they can talk to if they want to talk.”

“ What’s wrong with you?”

“ What’s happened to you?”

“ Remember adult tone of voice, body language and any challenging language.”

“ One-to-one time with teacher to provide opportunities to talk, for example, helping with a job.”

to...

“ Greet with a smile (McCrory).”

“ Make the activities right for that child and how they are feeling that day.”

WHAT WILL HAPPEN NEXT

- Key Adult contact details passed to the police
- Letters sent to parents – July 2021
- Whole setting awareness raising
- Information shared with wider community (press release)
- Nursery/Pre-School prospective and website updated.
Information available in school
- Posters displayed
- GO LIVE – 6th September 2021

For more information and resources, visit:

<https://www.operationencompass.org/>



Any Questions

