

St. Anne's School Prospectus

Academic Year 2023 to 2024



“Great oaks from little acorns grow”



St. Anne's School
ALDERNEY

Contents

Autumn 2023.....	3
A short history of St Anne's School, Alderney	4
Core Beliefs	5
Intentions	5
Teaching Staff	7
Non-teaching staff	7
The School Day.....	9
Term Dates	10
Discipline.....	11
A Special Atmosphere.....	11
Foundation and Key Stage 1	12
Key Stage 2	13
Key Stages 3 and 4.....	14
A Crucial Part of Children's Learning.....	15
What is the value of homework?	15
How can parents help?.....	15
Special Educational Needs	16
Additional Activities/ Enrichment	16
School Grounds	16
Money and Valuables.....	16
Jewellery	16
Equipment Needed	16
School Dress Requirements.....	17
School Dress Requirements – P.E. Clothing	18
Infants (EYFS-Yr2):	18
Junior & Seniors (Yr 3-11):	18
Illness.....	19
School Nursing Service	19
Appointments	19
Assessment and Reporting	20
Open-Door Policy	20
Holidays	20
Lateness	20
STATES OF GUERNSEY	21
ST. ANNE'S SCHOOL	21



Headteacher's Welcome

Autumn 2023

Dear Parents,

I am delighted to have commenced my headship at St. Anne's School this term and along with the staff team, I have already begun working hard to capitalise on the strengths of our school as well as building an even brighter future for our learners.

We are a very happy school with a real sense of community. Staff, parents and wider community members all strive to ensure that our children receive the very best education in a warm, safe and engaging learning environment. We make the most of our school setting, taking full advantage of our outdoor space and the opportunities for learning outside of the classroom. The size of the school (currently 120 Pupils on roll) ensures that the high expectations of all of our pupils can be realised. It allows us to provide individual attention to pupils and encourages good relationships right across our All-through school (4-16yrs).

We are justly proud of our school, our pupils and their achievements. At St. Anne's our standards of discipline are high and the children wear their uniform with pride. We have bright and well-equipped teaching rooms in all parts of the school. We have good links between home and school and are aiming to further strengthen this as we know that this partnership is essential to enable difficulties to be shared, problems resolved and success celebrated. We also value your contribution in supporting your child with work at home, a role which is vital to maximise the level of progress which can be achieved.

The atmosphere we aim to create at St. Anne's School is one of a large family where every member of the school is valued and feels a sense of belonging. We have cheerful, highly motivated and well qualified teaching and ancillary staff and it is a place where the culture of learning is at the heart of everything we do; a place where both adults and children alike make every effort to acquire new skills and knowledge every day.

We are confident that St. Anne's provides a good education for its pupils and we and Guernsey's Education Service feel sure that your child will be happy, challenged and provided with the opportunity to develop into a well-rounded and responsible adult. We look forward to working in partnership with you over the next few years and hope that together we will provide an excellent foundation for your child's future successes.

Mrs Wendy J Wilson
Headteacher

History of the School



A short history of St. Anne's School, Alderney

The first school was founded in 1790. It was a gift to the Island from Jean Le Mesurier, who also invested a sum of money to pay for the running expenses. The school continued in its original buildings until the island was evacuated in 1940 which remained under occupation for 5 years.

After the war, the Islanders returned and it was decided by the States of Alderney and the States of Guernsey to preserve St Anne's as an 'all-age' school catering for children from 4-16. The school was re-established in its original building which now houses the Island Museum.

In 1968 the new school was built and the children moved into the school in 1969. The school had become the only Island school after an agreement was made with the Roman Catholic Church whereby Catholic Instruction is taught to all Catholics. In return the Roman Catholic community agreed not to establish a separate school.

The school retains its unique status as an all-age school in full Local Authority Control. It is now administered by the States of Guernsey Education Council. The buildings, which enjoy superb views across Braye beach and Fort Albert, have been considerably extended and modernised over the past 30 years to cater for the growing demands of educating the Island's children.



Photos: Braye Bay

Above: Braye Harbour at sunset;

Below left: Braye Common with Fort Albert in the background;

Below right: Braye Beach and Douglas Quay





Vision and Values

Core Beliefs

We believe that St. Anne's School's small size offers enormous opportunities for our pupils and staff. Our guiding principles derive from our belief in the value of this size as a positive benefit for the pupils, staff, parents and community of Alderney.

Our Vision is to BRING EQUALITY OF EDUCATIONAL EXPERIENCE TO EVERY PUPIL IN ORDER TO MAXIMISE OUTCOMES FOR ALL.

To ensure our pupils are 'Inspired to Learn, Supported to Succeed', we encourage them to:

- Develop an inquiring mind and a love of learning
- Use their imagination and be creative in solving problems
- Show respect, self-discipline and self-awareness
- Work effectively on their own and with others
- Develop a portfolio of skills
- Have high expectations of themselves
- Show courage and perseverance when facing challenge

Intentions

In this unique school, the particular opportunities which we continue to foster are:

For the pupil:

- Providing emotional security in a safe environment
- Monitoring individual academic and social progress closely
- Enabling all children to reach their full potential and to be motivated to continue to improve on their own performance in pursuit of quality
- Developing and supporting aspirations for ever-higher standards in all fields
- Recognising, rewarding and developing the talents and abilities of every individual child
- Encouraging and rewarding hard work
- Ensuring a rigorous approach to raising achievement
- Developing values of self-discipline, self-esteem, fairness, respect, courtesy and honesty
- Equipping children for adulthood and for lifelong learning by preparing for the world that will be met on leaving St. Anne's School
- Ensuring social development based on the confidence which comes from being valued as part of the school community



Vision and Values

For the school:

- Creating a caring, welcoming and safe place where adults and children can work effectively together
- Providing a curriculum which is broad, balanced, meaningful and coherent and which addresses the needs of the Island's children
- Valuing and respecting everyone's contribution
- Respecting difference by helping children to learn to feel social concern, care and respect for the feelings needs and beliefs of others as well as their own
- Promoting collaboration
- Developing good communication among all individuals and sections of the school
- Nurturing pride in the school among all its members
- Maintaining and developing external visits, visits to the school and the use of technology to broaden horizons and overcome the difficulties of geographical isolation

For the community:

- Developing and safeguarding good relationships and communication between school and parents
- Encouraging parents to share in their child's learning both socially and academically
- Developing and maintaining close connections with the wider community on the Island
- Using all means of public relations to communicate the values we hold and the successes we celebrate

Staff List

Teaching Staff

Mrs. W Wilson	Headteacher
Ms. D Dix	Deputy Headteacher
Mrs. G Costello	Reception Teacher, EYFS, Pre- School FS1
Miss C Varley	Year 1 and Year 2 Teacher
Miss E Jerram	Year 3 and Year 4 Teacher
Mr. N Smith	Year 5 and Year 6 Teacher
/Ms. A Morgan	
Mrs. H Walsh	Maths Teacher, Tutor Group C Teacher
Ms. I Brooke	Science Teacher, DofE Coordinator
Mr. C Kemp	Art and Graphics Teacher, Tutor Group B Teacher
Ms. V Sciarrino	Modern Foreign Languages, Year 11 Tutor
Miss. P Smith	English Teacher, Tutor Group A Teacher
Ms. K Smith	SENCo, Inclusion Lead / Designated Safeguarding Lead
Miss J Allison	Complex Needs Teacher
Mr B Gardner	Computing Science
Miss K Mark	Music and DT Teacher
Mr. M Jerling	Geography, History Teacher, RE and PSHE
Mr. R Kirkland	PE Teacher
Mrs. L Gillingham	Literacy Intervention Teacher
Mr. N Burton	Music Teacher – The Music Service
Miss E Costea	Cover Supervisor
Mrs. A Etheredge	Sea Swimming Coordinator

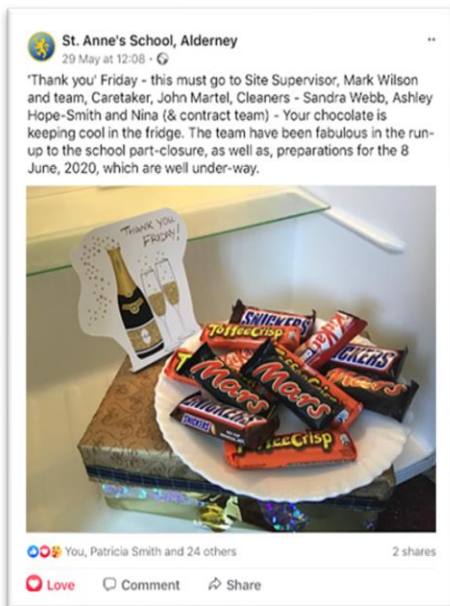
Non-teaching staff

Miss. H Phillips	Reception LSA
Mrs. R Gentle	Complex Needs LSA
Miss E Coles	Infants LSA
Miss. S Gaudion	Infants LSA
Miss A Chandler	Infants LSA
Ms. F Baron	Junior LSA
Mrs. S Jenkins	Senior LSA/ MHWB coordinator
Miss C Cotton	Junior LSA
Miss S King	LSA
Mrs. E Odoli	Librarian
Mr. M Brown	IT/Science Technician

Staff List

Ms. S Ollivier
Miss. S Parrilla
Mr. M Wilson
Mr. K Gentle
Mrs. S Webb
Mr. A Hope-Smith

Administration Assistant, Finance Officer
Administration Officer, Exams Officer
Site Manager, Fire Marshall
Cleaner
Cleaner
Cleaner





Organisation

The school has approximately 120 children and 20 teachers. The children are grouped in 9 academic year groups with an average of just under 13 per class. Children enter the school in September following their 4th birthday and spend three years in the Infant department. The next four years are in the Junior department until they are 11 when they move into the Senior Department.

In the Infants and Juniors the children are class based and the first point of contact should be the class teacher. In the Seniors, the person with the responsibility for pastoral care is the Group Tutor or Form Tutor. The Headteacher or Deputy Headteacher may also be contacted.

When children start school they are assigned to one of three houses – Ortac (green), Casquets (red) or Burhou (blue). These houses are the focus of many school activities and provide a coherence and sense of belonging to the whole school from 4-16. During the week the children collect house points for good work and these are collated for celebration assemblies. Weekly and cumulative totals are announced which drive the Island boat race which is displayed at the back of the Hall.

Moving on – the school has excellent links with the FE College in Guernsey and also with the Grammar School. It is to one of these that many pupils transfer at 16 to continue their education.

The School Day

Whole school:

08:30 – 08:50 Registration, Assembly, TutorTime

Break and finishing times:

Preschool – Foundation 1 class can arrive from 8.30am.
 9.00am – 12.00am Monday – Friday (15 Hours free provided)

Infants: (R, Y1-2)	10:30 – 10:45	Break
	12:20 – 13:25	Lunch
	14:50	Finish
Juniors: (Y3-6)	10:30 – 10:45	Break
	12:25 – 13:25	Lunch
	14:50	Finish
Seniors: (Y7-11)	10:30 – 10:45	Break
	12:25 – 13:25	Lunch
	15:05	Finish



The remainder of the day is divided into 6 periods.
 Children are asked to arrive no more than 10 minutes before morning or afternoon school for safety and supervision reasons.



Term Dates 22-23

Autumn Term

Monday 4th September
Wednesday 6th September
Monday 23rd October to Friday 27th October
Friday 22nd December

Term Starts (Staff)
Term Starts (Pupils)
Half Term
Term Ends

Spring Term

Monday 8th January
Tuesday 9th January
Monday 12th February to Friday 16th February
Friday 22nd March

Term Starts (Staff)
Term Starts (Pupils)
Half Term
Term Ends

Summer Term

Monday 8th April
Wednesday 10th April
Monday 6th May
Monday 27th May to Friday 31st May
Friday 19th July

Term Starts (Staff)
Term Starts (Pupils)
May Day Bank Holiday
Half Term
Term Ends



School Year





Discipline/Conduct/ A Special Atmosphere

Discipline

We believe that high standards of behaviour should be encouraged and expected at all times. As St. Anne's School is small enough for all pupils to be known to all members of staff, discipline problems can be resolved quickly and in accordance with our Engagement Policy.

Positive Behaviour Code

We have a behaviour policy at St. Anne's School and believe that if it is followed by all, in and out of school, life will be pleasant for everyone. The main ethos is:

**'WE WILL BEHAVE WITH COURTESY AND
CONSIDERATION FOR OTHERS AT ALL TIMES'**

Behaviour Code - Our School Rules at St. Anne's

As a school community we all agree to:

- work to the best of our ability and not disturb the learning of others.
- work within the guidelines set in each subject.
- listen carefully, without calling out, when others are talking and to respect their right to express their views and opinions.
- show respect to others by not name calling, hitting, or bullying in any way.
- look after property belonging to ourselves, others and the school and to take care of our environment.

A Special Atmosphere

Visitors to our school sense something different. They focus first on the uniform, or the politeness of the pupils, but eventually realize that it is the way our pupils enjoy their school experience that makes the difference. Within our school, we have three smaller communities, Infants, Juniors and Seniors. The curriculum is divided into four sections known as key stages.



What do pupils learn? Infants

Foundation and Key Stage 1

This includes the Reception class (Foundation Stage), Year 1 and Year 2 (Key Stage 1) pupils. The children in the Infants initially learn in a fully integrated way where structured play activities run alongside early reading and writing skills, maths and a whole variety of social and physical development.

By the age of 5 this becomes a full curriculum entitlement of:

- English
- Maths
- Science
- Geography
- Technology
- P.E.
- R.E.
- French
- Art
- Music
- History

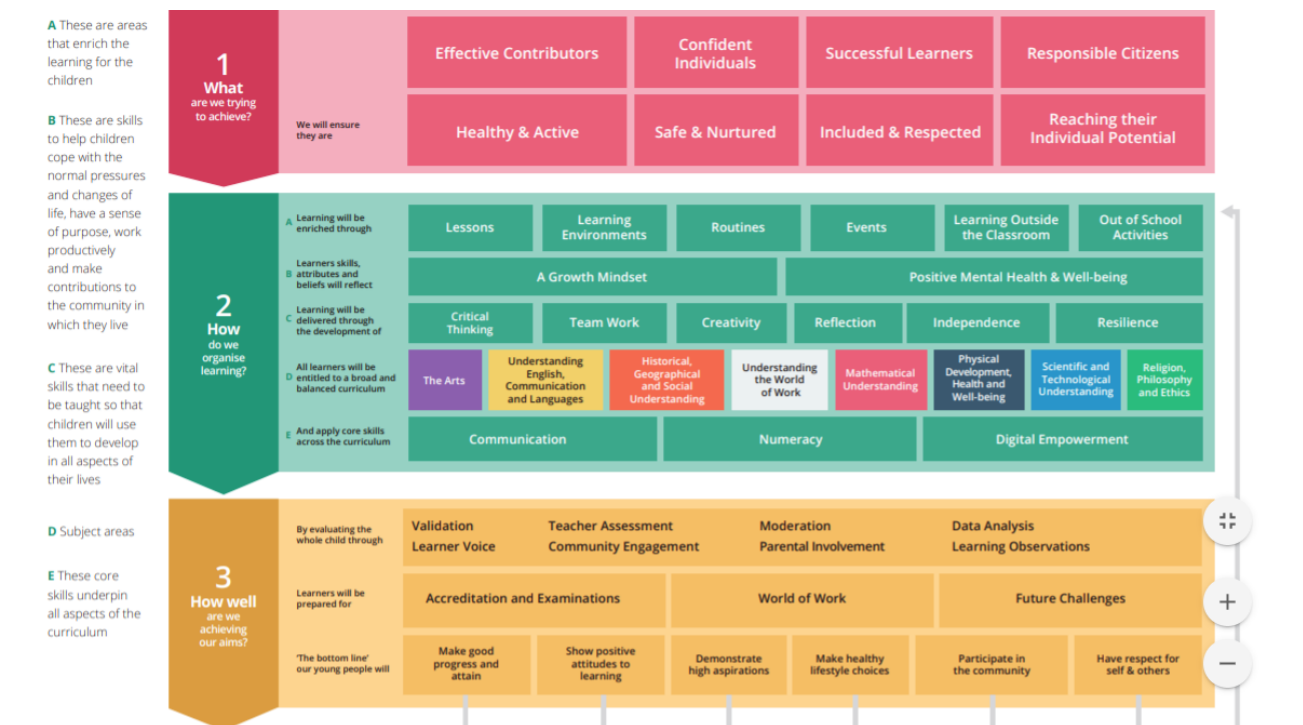


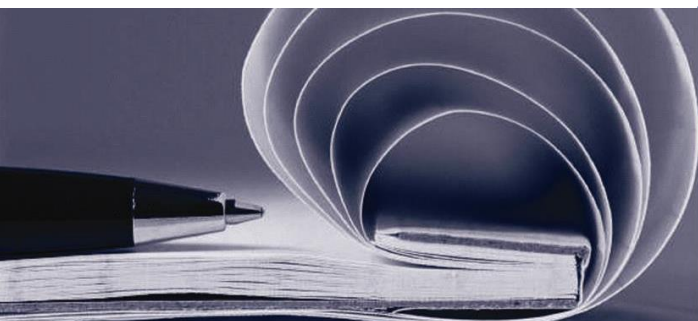
What do pupils learn?

Juniors

Key Stage 2

This includes Years 3, 4, 5 and 6. Children continue with the full curriculum. The children begin to be introduced to specialist teachers and use specialist rooms for some subjects. Sex education is also introduced from Year 5 (9 year olds). Please follow this link for more information about Guernsey Education Services **Big Picture Curriculum** <https://www.gov.gg/curriculum>





What do pupils learn?

Seniors

Key Stages 3 and 4

Pupils continue to follow the Big Picture Curriculum at Key Stage 3 which includes Years 7, 8 and 9. Key Stage 4 includes Year 10 and 11. At this point pupils follow the National Curriculum for exam subjects and have access to elements of the Big Picture curriculum (see previous page). This provision at Secondary level provides a broad and balanced programme of study in which St. Anne's builds on and extends the work done in the Juniors. Adding other subjects develops increased understanding and new, holistic enrichment skills.

Key Stage 3 pupils follow courses in:

- English
- Maths
- Science
- Geography
- History
- French
- Computing
- Design Technology
- P.E.
- Personal, Social and Health Education (PSHE)
- Drama
- Art
- Food Technology

Some careers advice is also introduced in Year 9 (13 year olds).

Key Stage 4 in Years 10 and 11 examination courses begin and these run alongside vocational options. All pupils follow courses in:

- English
- Maths
- Science
- PSHE
- P.E.
- Careers
- R.E.
- History or Geography
- French

In addition, option subjects are chosen from:

- P.E.
- Computing
- Science
- Fine Art
- Photography
- Music
- Vocational choices

The range of options is determined by demand and by staffing and timetabling restrictions. During Year 11 pupils all undertake some work experience. Also in Year 11, some pupils might follow a more work-related curriculum.



Homework

A Crucial Part of Children's Learning

Homework is regarded as a crucial part of children's learning and is, therefore, a compulsory element of our education provision. It begins as a sharing time in the Infants – e.g. early reading books – and develops through the more formal stage in the Juniors – e.g. spelling test preparation, research tasks.

At Senior level homework is timetabled to cover work done outside the school day. It is a largely unsupervised extension of the activities that take place in school. Senior pupils record all homework in their homework diaries which are checked and signed each week by both teacher and parent.

The amount of homework set each night will increase from about 1 hour at Year 7 to 2½ hours at Year 11.

It is not our intention to overload any pupil with homework or to prevent the sensible pursuit of leisure activities.

What is the value of homework?

1. It allows pupils to take responsibility for their own learning.
2. It encourages the practice of independent study.
3. It develops perseverance and self-discipline.
4. It allows pupils to practise and develop skills learned in the classroom.
5. It allows pupils to cover more ground.
6. It encourages parents to take an active interest in their child's work.
7. It opens up areas of study and allows pupils to make use of materials and information that are not accessible in the classroom.
- 8.

How can parents help?

1. By checking presentation, spelling and handwriting.
2. By testing what has been set to be learned, listening to children read and asking them to explain what they have been studying.
3. By providing uninterrupted time and a quiet room for work.
4. By giving homework a higher priority than watching TV, playing on devices or going out.
5. By knowing your child's weekly and daily timetable. Keep a copy at home!
6. By checking on books and equipment brought home, and seeing that they are used properly and returned
7. By checking and signing the homework diary weekly. Please add comments if you wish.



Additional Information

Special Educational Needs

The school caters for children of all abilities and if children are in need of extra support due to special educational needs they get this through our Inclusion Lead. This is available to children of all ages and integrates into their daily timetable to provide support where and when they need it most.

Additional Activities/ Enrichment

These vary in nature and are for Infants, Juniors and Seniors. They take place during some lunchtimes and after school. They run as clubs and some current examples are Infant Design and Technology, Junior Tag Rugby, and Junior Choir, 5 aside football and Revision/ Catch-up clubs.

School Grounds

The school grounds are made available for children to use in school hours. It should be emphasised that children are expected to treat them and all school equipment with respect.

Money and Valuables

The school cannot be liable for any losses, and so money or valuable property should not generally be brought into school. Where this cannot be avoided, money and valuables should be handed to a teacher for safe keeping and should never be left in coats or bags. All seniors are offered a locker and a £5 returnable key deposit is required for this. Children changing for P.E. or games should leave watches with the teacher and collect them afterwards.

Jewellery

Other than a watch, pupils may not wear jewellery nor should they wear make-up or nail varnish. Pupils with pierced ears may wear ONE pair of plain studs only (during PE and other activities pupils will need to remove piercings). There are to be no facial piercings.

Equipment Needed

All necessary equipment is provided by the school, but we do expect all children to bring with them the basic essentials to include blue or black pens, pencil, rubber, ruler, coloured pencils, sharpener and a calculator.



School Uniform

School Dress Requirements

All children in school wear uniform and parents are tremendous in their support and co-operation. Particular items of uniform may be bought from in Sew Much Fun in Victoria Street as they include the school logo. Please note that hairstyles should be 'conventional' and hair colour should be of a natural hue.

Seniors:

- black school blazer (only available from Sew Much Fun)
- black school tie (only available from Sew Much Fun)
- plain white cotton shirt
- black sweatshirt (only available from Sew Much Fun)
- black or grey skirt (**knee length**) or trousers (**not skinny/stretch fit**)
- black shoes. Flat 'sensible' shoes are appropriate for safety reasons. **Trainers are not acceptable as school footwear.**
- black socks or tights. White socks can be worn with skirts.



Juniors:

- white polo shirt
- school sweatshirt / cardigan in 'Alderney' blue with gold logo (only available from Sew Much Fun)
- black or grey skirt (**knee length**) or trousers (**not skinny/stretch fit**)
- black socks or tights
- white socks may be worn with a skirt/dress.
- black shoes. Flat 'sensible' shoes are appropriate for safety reasons. **Trainers are not acceptable as school footwear In the summer** girls may opt to wear Alderney blue gingham dresses.



Infants:

- white polo shirt.
- school sweatshirt / cardigan in 'Alderney' blue with gold logo (only available from Sew Much Fun)
- black or grey skirt, dress or trousers.
- black shoes. Flat 'sensible' shoes are appropriate for safety reasons. **Trainers are not acceptable as school footwear.**
- black or grey socks or tights.
- white socks may be worn with skirt/dress.
- **In the summer** girls may opt to wear Alderney blue gingham dresses.

PE Kit



School Dress Requirements – P.E. Clothing

Infants (EYFS-Yr2):

- coloured t-shirt and shorts – t-shirt in house colours, blue shorts
- white socks
- trainers or plimsolls
- optional for Juniors – **plain** navy-blue tracksuit bottoms (no white stripes) and **plain** P.E. navy sweatshirt for cold weather/outdoors.
- P.E. bag and swimming bag.

Junior & Seniors (Yr. 3-11):

- In 2017-8 we introduced our new PE kit for St. Anne's to bring our school in line with the other schools in the Bailiwick. It provides a fresh focus for sports at our school and promotes the importance of sport for a healthy lifestyle. Please see the attached letter for how to order PE kit.
- Polo Shirt – embroidered
- Rugby Shirt
- Shorts or Skort
- $\frac{3}{4}$ black leggings
- $\frac{1}{4}$ zip hoodie – embroidered
- Pro-Star socks in navy/gold colour

Samples of this kit will be available to view at Year 7 Transition evening.



Illness

If children are unwell they should be kept at home and school notified on the **first** day of absence giving detail of their illness please. (Please follow **current Covid 19 guidance** [see [Gov.uk website](https://www.gov.uk/government/coronavirus-covid-19)] for schools if your child is displaying any of the symptoms). The absence will then be recorded as an authorised medical absence, for register purposes. We would ask that parents keep the school informed of a child's medical progress every day, please. If a child becomes unwell at school it is vital that we are able to contact parents or friends who are able to collect their children as we are unable to provide for them comfortably at school.

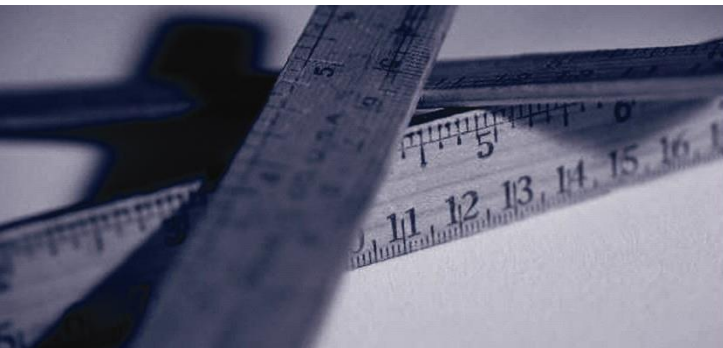
School Nursing Service

The School Nurse is available for help and advice on health issues for all students, parents and teachers. A health review is offered to Year 7 students and further checks such as vision, hearing and weight are available on request throughout the secondary school years. The School Nurse holds a confidential 'Drop-in clinic' each week and will see students on their own. The teenage immunisation booster is now given in school by the School Nurses and will be given in Year 9. Parents will be notified when this will be. The School Nurse can be contacted at Lukis House on telephone number 725241 or via school.

Appointments

Children will be given permission to leave school for dental or medical appointments. Please advise the class/form teacher in writing. A note in the school diary is fine.

Do I need to keep my child off school?					
Chicken Pox Until all spots have crusted over	Conjunctivitis No need to stay off but school should be informed	Diarrhoea & Vomiting 48 hours from last episode	Glandular Fever No need to stay off but school should be informed	Hand, foot & mouth No need to stay off but school should be informed	Impetigo Until lesions are crusted & healed or 48 hours after commencing antibiotics
Measles or German measles 4 days from onset of rash	Mumps 5 days after swelling begins	Scabies Until after 1 st treatment	Scarlet Fever 24 hours after antibiotics start	Slapped Cheek No need to stay off but school should be informed	Whooping Cough 48 hours after antibiotics start
Flu Until recovered	Head Lice No need to stay off but school should be informed	Threadworms No need to stay off but school should be informed	Tonsillitis No need to stay off but school should be informed		



- **Assessment and Reporting**
- **Open Door Policy**

Assessment and Reporting

- Progress in all subjects is regularly monitored and assessed.
- From Year 7 onwards parents receive full reports showing progress in all subjects.
- In Year 11 children sit full GCSE examinations. Some subjects also have course work elements and modular tests throughout Years 10 and 11.

Autumn Term

Parents are invited to a 'meet the teacher' evening to be introduced to any new teachers their child may have and also to hear about the planned programs of study for the year. This is an open forum where teachers are always happy to address any questions or concerns from parents.

Spring Term

Individual parents' evening sessions are held for parents to talk specifically with their child's teachers about progress and levels of achievement. Any particular queries or concerns should be discussed.

Spring/ Summer Term

Parents receive an annual report on their child's progress covering all aspects of the curriculum and containing test results where appropriate.

Open-Door Policy

No matter how trivial an issue may seem it is always worth dealing with before it grows into something bigger. It is for this reason that we have an Open-Door Policy and are happy to meet with any parent throughout the year. If you wish to speak with a class/form teacher please call in or telephone to arrange a convenient time.

If you would rather speak with the Headteacher or Deputy Head Teacher we are always happy to see you and will do so immediately if the situation is most urgent.

The School/Home partnership is vital and good communications are the key to making it successful.

Holidays

The Education Council is responsible for providing education for children between 5 and 16. It is the responsibility of the parents to ensure that their children receive full time education. Wherever possible, absence, including family holidays, during term time should be avoided. However, should this be unavoidable, please inform the Headteacher in writing.

Lateness

Punctuality is important for efficiency and also for developing good habits in our children. It is considered discourteous to arrive late to lessons. If a child is frequently late they may be expected to make up the time.



Contact us

STATES OF GUERNSEY

Committee for Education, Sport & Culture
Sir Charles Frossard House
St Peter Port
Guernsey
GY1 1FH

Tel: 01481 224000

Fax: 01481 714475

Director of Education: Nick Hynes



St. Anne's School
ALDERNEY

ST. ANNE'S SCHOOL

St Anne's School
Alderney Channel
Islands GY9 3XP

Tel: 01481 822173

Fax: 01481 822174

E-Mail: office@alderney.sch.gg

Website: www.alderney.sch.gg

HEADTEACHER: Wendy Wilson

SCHOOL MANAGEMENT COMMITTEE:

Mrs. J Corder (President's Representative) – Chair
Mrs. J Eggleston (Chamber of Commerce) – Vice Chair
Steve Roberts (Education)
Ian Carter (States of Alderney)
Mrs. B Chapman (PTA Chair)
David Stretton (Church representative)