

St. Anne's School Prospectus



“Great oaks from little acorns grow”



St. Anne's School
ALDERNEY

Contents

Autumn 2025.....	3
A short history of St. Anne's School, Alderney	4
Teaching Staff.....	6
Non-teaching staff	6
The School Day.....	9
.....	9
.....	10
Term Dates 25-26	10
Discipline.....	11
A Special Atmosphere.....	11
Foundation and Key Stage 1	12
Key Stage 2	13
Key Stages 3 and 4	14
A Crucial Part of Children's Learning.....	15
What is the value of homework?	15
How can parents help?.....	15
Special Educational Needs	16
Additional Activities/ Enrichment	16
School Grounds	16
Money and Valuables.....	16
Jewellery	16
Equipment Needed	16
School Dress Requirements.....	17
School Dress Requirements – P.E. Clothing	18
Infants (EYFS-Yr.2):	18
Junior & Seniors (Yr. 3-11):	18
Illness.....	19
School Nursing Service	19
Appointments	19
Assessment and Reporting	20
Open-Door Policy	20
Holidays	20
Lateness	20
STATES OF GUERNSEY	21
ST. ANNE'S SCHOOL	21



Headteacher's Welcome

Autumn 2025

Dear Parents,

I am privileged to lead St Anne's School as Headteacher. The current Bailiwick wide Education Strategy priorities serve to deliver high quality learning with excellent outcomes along with the support and challenge of high-quality governance. This helps every member of our staff team to capitalise on the strengths of our school and assists us in building bright futures for our learners. We continue to be a very happy school with a real sense of community.

Staff, parents and wider community members all strive to ensure that our children receive the very best education in a warm, safe and engaging learning environment. We make the most of our school setting, taking full advantage of our outdoor space and the opportunities for learning outside of the classroom. The size of the school (currently 154 pupils on roll) ensures that the high expectations of all of our pupils can be realised. It allows us to provide individual attention to pupils and encourages good relationships right across our All-through school (3-16yrs).

We are justly proud of our school, our pupils and their achievements. At St. Anne's our standards of discipline are high, and the children wear their uniform with pride. We have bright and well-equipped teaching rooms in all parts of the school. Also, a significant investment in new technology across Bailiwick schools is helping to develop the digital skills of young people and staff at St Anne's. We have strong links between home and school and know that this partnership is essential to enable difficulties to be shared, problems resolved, and success celebrated. We also value your contribution in supporting your child with work at home, a role which is vital to maximise the level of progress which can be achieved.

The atmosphere we aim to create at St. Anne's School is one of a large family where every member of the school is valued and feels a sense of belonging. We have cheerful, highly motivated and well qualified teaching and ancillary staff and it is a place where the culture of learning is at the heart of everything we do; a place where both adults and children alike make every effort to acquire new skills and knowledge every day. In all we do, we truly embody our school mission 'Great oaks from little acorns grow.' We are confident that St. Anne's provides a good education for its pupils and we and Guernsey's Education Service feel sure that your child will be happy, challenged and provided with the opportunity to develop into a well-rounded and responsible adult. We look forward to working in partnership with you and hope that together we will provide an excellent foundation for your child's future successes.

Mrs. Wendy J Wilson
Headteacher

History of the School



A short history of St. Anne's School, Alderney

The first school was founded in 1790. It was a gift to the Island from Jean Le Mesurier, who also invested a sum of money to pay for the running expenses. The school continued in its original buildings until the island was evacuated in 1940 which remained under occupation for 5 years.

After the war, the Islanders returned, and it was decided by the States of Alderney and the States of Guernsey to preserve St Anne's as an 'all-age' school catering for children from 4-16. The school was re-established in its original building which now houses the Island Museum.

In 1968 the new school was built and the children moved into the school in 1969. The school had become the only Island school after an agreement was made with the Roman Catholic Church whereby Catholic Instruction is taught to all Catholics. In return the Roman Catholic community agreed not to establish a separate school.

The school retains its unique status as an all-age school in full Local Authority Control. It is now administered by the States of Guernsey Education Council. The buildings, which enjoy superb views across Braye beach and Fort Albert, have been considerably extended and modernised over the past 30 years to cater for the growing demands of educating the Island's children.



Photos: Braye Bay

Above: Braye Harbour at sunset;

Below left: Braye Common with Fort Albert in the background;

Below right: Braye Beach and Douglas Quay





Vision and Values

Our Vision

At St. Anne's School, we asked 'What should the world of our learners look like as a result of our work?' The answer- Our learners are 21st century global citizens, moving at a fast-pace towards a hi-tech sustainable future. Our work at St Anne's has to provide the strong foundations to help them navigate this and prepare them for success, well-being and happiness.

Our vision is ambitious and aspirational. Working at the heart of our community, we are a truly unique all through 3-16 school and we believe that our vision should be at the heart of what we do, every day. We aim to nourish our learners to grow into 'great oaks' from their beginnings as 'little acorns.'

Our Aims

Underpinned by the Guernsey Big Picture Curriculum and the Commitments of the Guernsey Education Strategy, St Anne's School aims to deliver a broad, ambitious and balanced curriculum along with wide ranging enrichment opportunities at all stages which support pupils to be:

Effective contributors; confident individual; successful learners; responsible citizens; healthy and active; safe and nurtured; included and respected and to reach their individual potential.

In doing so, we will prepare our pupils to take responsibility for themselves, their community and the planet. They will develop resilience to face and embrace the challenges of the future and solve the problems that we cannot yet predict.

We regularly review the progress of our learners and evaluate our school's provision against each of Big Picture skills, using a wide range of external and internal quality assurance measures. Continuously adapting our school priorities and development plans, each year we aim to further improve our offer.

Our Shared Values

'Great oaks from little acorns grow.'

All members of St Anne's School Community are **GREAT**:

G- Global citizens of the future

R- Responsible, resilient & respected

E- Ethical and compassionate

A- Aspirational, innovators & we cherish knowledge

T- Treasured, included & kind

Staff List

Teaching Staff

Mrs. W Wilson	Headteacher
Ms. D Dix	Deputy Headteacher
Miss. K Mark	Reception Teacher
Mrs C Gildert	Year 1 and Year 2 Teacher, EYFS, Pre- School FS1
Miss E Jerram	Year 3 and Year 4
Ms. A Morgan	Year 6 Teacher
Mr. N Smith	Year 5 Teacher
Mr M Hubert	Maths Teacher,
Ms. I Brooke	Science Teacher, DofE Coordinator
Mr. J Leeson	Art and Graphics Teacher and DT Teacher, Tutor Group B Teacher
Ms. V Sciarrino	Modern Foreign Languages, Year 11 Tutor
Miss. P Smith	English Teacher, Tutor Group A Teacher
Ms. K Smith	SENCo, Inclusion Lead / Designated Safeguarding Lead
Miss J Allison	Complex Needs Teacher
Vacancy	Computing Science
Ms Hockey	Music and RE
Mr. J Holland	Geography, History Teacher, RE and PSHCE, Tutor Group C Teacher
Mr. R Kirkland	PE Teacher
Mrs. L Gillingham	Literacy Intervention Teacher
Mrs. M Collier	Music Teacher – The Music Service
Miss E Ungureanu	Cover Supervisor
Mrs. A Etheredge	Sea Swimming Coordinator

Non-teaching staff

Miss. H Phillips	Reception LSA
Mrs. R Gentle	Complex Needs LSA
Miss E Coles	Infants LSA
Miss. S Gaudion	Infants LSA
Miss. A Chandler	Infants LSA
Miss. P Matimong	LSA
Miss. S King	LSA
Ms. F Baron	Junior LSA
Miss. N Kelleher	Supply LSA
Mrs. S Jenkins	Senior LSA/ MHWB coordinator
Miss C Cotton	Junior LSA

Staff List

Mrs. E Odoli
Mr. C Parmentier
Ms. S Ollivier
Miss. S Parrilla
Mr. M Wilson
Mr. K Gentle
Mrs. S Webb
Mr. A Hope-Smith

Librarian
IT/Science Technician
Administration Assistant, Finance Officer
Administration Officer, Exams Officer
Site Manager, Fire Marshall
Cleaner
Cleaner
Cleaner





Organisation

The school has approximately 154 children, 21 teachers and 16 ancillary staff. The children are grouped in 12 academic year groups with an average of just under 12 per class. Children join pre-school the school in September following their 3rd birthday and then mainstream school in September following their 4th birthday and spend three years in the Infant department. The next four years are in the Junior department until they are 11 when they move into the Senior Department for Secondary education.

In the Infants and Juniors, the children are class based, and the first point of contact should be the class teacher. In the Seniors, the person with the responsibility for pastoral care is the Group Tutor or Form Tutor. The Inclusion Manager, Headteacher or Deputy Headteacher can also be contacted.

When children start school, they are assigned to one of three houses – Ortac (green), Casquets (red) or Burhou (blue). These houses are the focus of many school activities and provide coherence, competition and sense of belonging. During the week the children collect house points for good work, and these are collated for celebration assemblies. Weekly and cumulative totals are announced and displayed on our website.

Moving on from Year 11– the school has excellent links with The Guernsey Institute and with The Sixth Form Centre in Guernsey. It is to one of these that many pupils transfer at 16 to continue their education and some choose to stay on island and undertake apprenticeships, with learning supported by local employers and The Guernsey Institute.



The School Day

The School Day

Whole school:

08:30 – 08:50 Registration, Assembly, Tutor Time

Break and finishing times:

Preschool – Foundation 1 class can arrive from 8.30am
9.00am – 12.00am Monday – Friday (15 Hours free provided)

Infants: (R, Y1-2)	10:30 – 10:45	Break
	12:20 – 13:25	Lunch
	14:50	Finish
Juniors: (Y3-6)	10:30 – 10:45	Break
	12:25 – 13:25	Lunch
	14:50	Finish
Seniors: (Y7-11)	10:30 – 10:45	Break
	12:25 – 13:25	Lunch
	15:05	Finish

The remainder of the day is divided into 6 periods.

Children are asked to arrive no more than 10 minutes before morning or afternoon school for safety and supervision reasons.





School Year

Term Dates 25-26

Autumn Term

Monday 1st September
Thursday 3rd September
Monday 27th October - Friday 31st October
Friday 12th December
Monday 15th December
Friday 19th December

Term Starts (Staff)
Term Starts (Pupils)
Half Term
Floating OAT Day (School is closed)
Homecoming Day Bank Holiday
Term Ends

Spring Term

Monday 5th January
Tuesday 6th January
Monday 16th February - Friday 20th February
Friday 27th March

Term Starts (Staff)
Term Starts (Pupils)
Half Term
Term Ends

Summer Term

Monday 13th April
Tuesday 14th April
Monday 4th May
Monday 25th May - Friday 29th May
Friday 17th July

Term Starts (Staff)
Term Starts (Pupils)
May Day Bank Holiday
Half Term
Term Ends





Discipline/Conduct/ A Special Atmosphere

Discipline

We believe that high standards of behaviour should be encouraged and expected at all times. As St. Anne's School is small enough for all pupils to be known to all members of staff, discipline problems can be resolved quickly and in accordance with our Engagement Policy.

Positive Behaviour Code

We have a behaviour policy at St. Anne's School and believe that if it is followed by all, in and out of school, life will be pleasant for everyone. The main ethos is:

**'WE WILL BEHAVE WITH COURTESY AND
CONSIDERATION FOR OTHERS AT ALL TIMES'**

Behaviour Code - Our School Rules at St. Anne's

As a school community we all agree to:

- work to the best of our ability and not disturb the learning of others.
- work within the guidelines set in each subject.
- listen carefully, without calling out, when others are talking and to respect their right to express their views and opinions.
- show respect to others by not name calling, hitting, or bullying in any way.
- look after property belonging to ourselves, others and the school and to take care of our environment.

A Special Atmosphere

Visitors to our school sense something different. They focus first on the uniform, or the politeness of the pupils, but eventually realize that it is the way our pupils enjoy their school experience that makes the difference. Within our school, we have three smaller communities, Infants, Juniors and Seniors. The curriculum is divided into four sections known as key stages.



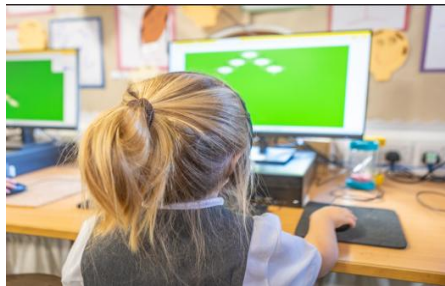
What do pupils learn? Infants

Foundation and Key Stage 1

This includes the Reception class (Foundation Stage), Year 1 and Year 2 (Key Stage 1) pupils. The children in the Infants initially learn in a fully integrated way where structured play activities run alongside early reading and writing skills, maths and a whole variety of social and physical development.

By the age of 5 this becomes a full curriculum entitlement of:

- English
- Maths
- Science
- Geography
- Technology
- P.E.
- R.E.
- French
- Art
- Music
- History





What do pupils learn? Juniors

Key Stage 2

This includes Years 3, 4, 5 and 6. Children continue with the full curriculum. The children begin to be introduced to specialist teachers and use specialist rooms for some subjects. Sex education is also introduced from Year 5 (9 year olds). Please follow this link for more information about Guernsey Education Services **Big Picture Curriculum** <https://www.gov.gg/curriculum>

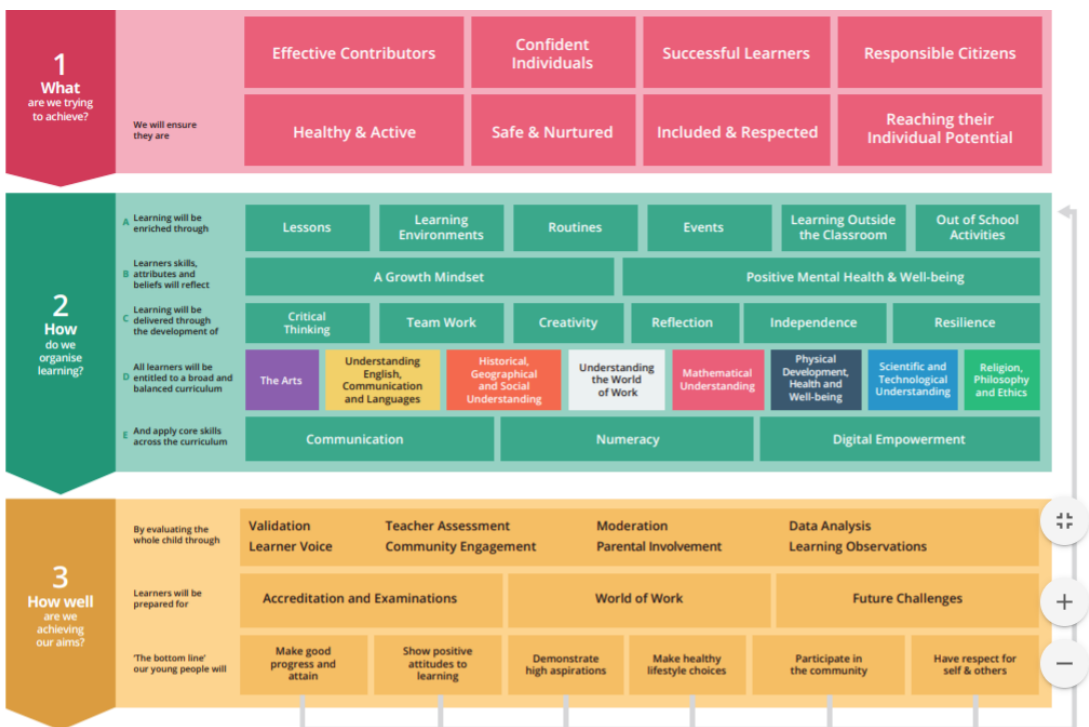
A These are areas that enrich the learning for the children

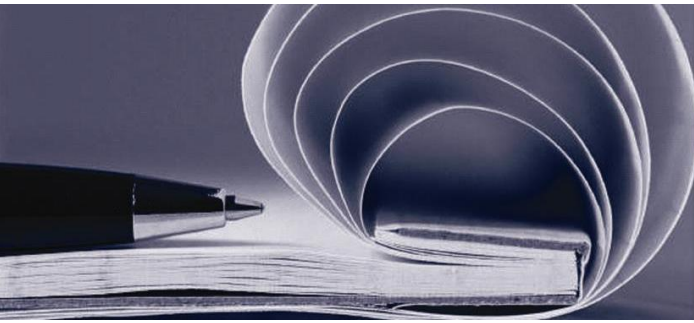
B These are skills to help children cope with the normal pressures and changes of life, have a sense of purpose, work productively and make contributions to the community in which they live

C These are vital skills that need to be taught so that children will use them to develop in all aspects of their lives

D Subject areas

E These core skills underpin all aspects of the curriculum





What do pupils learn? Seniors

Key Stages 3 and 4

Pupils continue to follow the Big Picture Curriculum at Key Stage 3 which includes Years 7, 8 and 9. Key Stage 4 includes Year 10 and 11. At this point pupils follow the National Curriculum for exam subjects and have access to elements of the Big Picture curriculum (see previous page). This provision at Secondary level provides a broad and balanced programme of study in which St. Anne's builds on and extends the work done in the Juniors. Adding other subjects develops increased understanding and new, holistic enrichment skills.

Key Stage 3 pupils follow courses in:

- English
- Maths
- Science
- Geography
- History
- French
- Computing
- Design Technology
- P.E.
- Personal, Social and Health Education (PSHE)
- Drama
- Art
- Food Technology

Some careers advice is also introduced in Year 9 (13 year olds).

Key Stage 4 in Years 10 and 11 examination courses begin. All pupils follow courses in:

- English
- Maths
- Science
- PSHE
- P.E.
- Careers
- R.E.
- History or Geography
- French

In addition, option subjects are chosen from:

- P.E.
- Computing
Science
- Fine Art
- Photography

The range of options is determined by demand and by staffing and timetabling restrictions. During Year 11 pupils all undertake some work experience. Also in Year 11, some pupils might follow a more work-related curriculum.



Homework

A Crucial Part of Children's Learning

Homework is regarded as a crucial part of children's learning and is, therefore, a compulsory element of our education provision. It begins as a sharing time in the Infants – e.g. early reading books – and develops through the more formal stage in the Juniors – e.g. spelling test preparation, research tasks.

At Senior level homework is timetabled to cover work done outside the school day. It is a largely unsupervised extension of the activities that take place in school. Senior pupils record all homework in their homework diaries which are checked and signed each week by both teacher and parent.

The amount of homework set each night will increase from about 1 hour at Year 7 to 2½ hours at Year 11.

It is not our intention to overload any pupil with homework or to prevent the sensible pursuit of leisure activities.

What is the value of homework?

1. It allows pupils to take responsibility for their own learning.
2. It encourages the practice of independent study.
3. It develops perseverance and self-discipline.
4. It allows pupils to practise and develop skills learned in the classroom.
5. It allows pupils to cover more ground.
6. It encourages parents to take an active interest in their child's work.
7. It opens up areas of study and allows pupils to make use of materials and information that are not accessible in the classroom.
- 8.

How can parents help?

1. By checking presentation, spelling and handwriting.
2. By testing what has been set to be learned, listening to children read and asking them to explain what they have been studying.
3. By providing uninterrupted time and a quiet room for work.
4. By giving homework, a higher priority than watching TV, playing on devices or going out.
5. By knowing your child's weekly and daily timetable. Keep a copy at home!
6. By checking on books and equipment brought home, and seeing that they are used properly and returned
7. By checking and signing the homework diary weekly. Please add comments if you wish.



Additional Information

Special Educational Needs

The school caters for children of all abilities and if children are in need of extra support due to special educational needs they get this through our Inclusion Lead. This is available to children of all ages and integrates into their daily timetable to provide support where and when they need it most.

Additional Activities/ Enrichment

These vary in nature and are for Infants, Juniors and Seniors. They take place during some lunchtimes and after school. They run as clubs and some current examples are Infant Design and Technology, Junior Tag Rugby, and Junior Choir, 5 aside football and Revision/ Catch-up clubs.

School Grounds

The school grounds are made available for children to use in school hours. It should be emphasised that children are expected to treat them and all school equipment with respect.

Money and Valuables

The school cannot be liable for any losses, and so money or valuable property should not generally be brought into school. Where this cannot be avoided, money and valuables should be handed to a teacher for safe keeping and should never be left in coats or bags. All seniors are offered a locker, and a £5 returnable key deposit is required for this. Children changing for P.E. or games should leave watches with the teacher and collect them afterwards.

Jewellery

Other than a watch, pupils should not wear jewellery, nor should they wear make-up or nail varnish. Pupils with pierced ears may wear ONE pair of plain studs only (during PE and other activities pupils will need to remove piercings). There are to be no facial piercings.

Hair

Hair colour should be of a natural hue, hair should be worn off the face, long hair should be tied back off the face and in a smart sensible style. There should be no extreme style, tramlines and other razored patterns are not allowed. Haircuts should be grade 2 minimum.

Equipment Needed

All necessary equipment is provided by the school, but we do expect all children to bring with them the basic essentials to include blue or black pens, pencil, rubber, ruler, coloured pencils, sharpener and a calculator.



School Uniform

School Dress Requirements

All children in school wear uniform and parents are tremendous in their support and co-operation. Particular items of uniform may be bought from in Sew Much Fun in Victoria Street as they include the school logo.

Seniors:

- black school blazer (only available from Sew Much Fun)
- black school tie (only available from Sew Much Fun)
- plain white cotton shirt
- black sweatshirt (only available from Sew Much Fun)
- black or grey skirt (**knee length**) or trousers (**not skinny/stretch fit**)
- black shoes. Flat 'sensible' shoes are appropriate for safety reasons. **Trainers are not acceptable as school footwear.**
- black socks or tights. White socks can be worn with skirts.

Juniors:

- white polo shirt
- school sweatshirt / cardigan in 'Alderney' blue with gold logo (only available from Sew Much Fun)
- black or grey skirt (**knee length**) or trousers (**not skinny/stretch fit**)
- black socks or tights
- white socks may be worn with a skirt/dress.
- black shoes. Flat 'sensible' shoes are appropriate for safety reasons.
Trainers are not acceptable as school footwear In the summer girls may opt to wear Alderney blue gingham dresses.

Infants:

- white polo shirt.
- school sweatshirt / cardigan in 'Alderney' blue with gold logo (only available from Sew Much Fun)
- black or grey skirt, dress or trousers.
- black shoes. Flat 'sensible' shoes are appropriate for safety reasons. **Trainers are not acceptable as school footwear.**
- black or grey socks or tights.
- white socks may be worn with skirt/dress.
- **In the summer** girls may opt to wear Alderney blue gingham dresses.

PE Kit



School Dress Requirements – P.E. Clothing

Infants (EYFS-Yr.2):

- coloured t-shirt and shorts – t-shirt in house colours, blue shorts
- white socks
- trainers or plimsolls
- optional for Juniors – **plain** navy-blue tracksuit bottoms (no white stripes) and **plain** P.E. navy sweatshirt for cold weather/outdoors.
- P.E. bag and swimming bag.

Junior & Seniors (Yr. 3-11):

- In 2017-8 we introduced our new PE kit for St. Anne's to bring our school in line with the other schools in the Bailiwick. It provides a fresh focus for sports at our school and promotes the importance of sport for a healthy lifestyle. Please see the attached letter for how to order PE kit.
- Polo Shirt – embroidered
- Rugby Shirt
- Shorts or Skort
- $\frac{3}{4}$ black leggings
- $\frac{1}{4}$ zip hoodie – embroidered
- Pro-Star socks in navy/gold colour

Samples of this kit will be available to view at Year 7 Transition evening.



Illness

If children are unwell, they should be kept at home and school notified on the **first** day of absence giving detail of their illness please. The absence will then be recorded as an authorised medical absence, for register purposes. We would ask that parents keep the school informed of a child's medical progress every day, please. If a child becomes unwell at school, it is vital that we are able to contact parents or friends who are able to collect their children as we are unable to provide for them comfortably at school.

School Nursing Service

The School Nurse is available for help and advice on health issues for all students, parents and teachers. A health review is offered to Year 7 students and further checks such as vision, hearing and weight are available on request throughout the secondary school years. The School Nurse holds a confidential 'Drop-in clinic' each week and will see students on their own. The teenage immunisation booster is now given in school by the School Nurses and will be given in Year 9. Parents will be notified when this will be. The School Nurse can be contacted at Lukis House on telephone number 01481 222011 or via school.

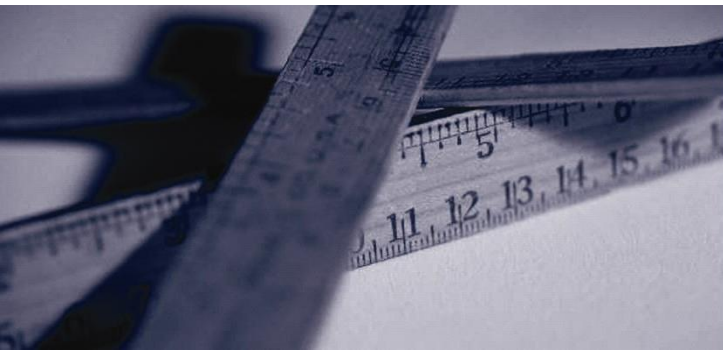
Appointments

Children will be given permission to leave school for dental or medical appointments. Please advise the class/form teacher in writing. A note in the school diary is fine.

Do I need to keep my child off school? 

Chicken Pox Until all spots have crusted over	Conjunctivitis No need to stay off but school should be informed	Diarrhoea & Vomiting 48 hours from last episode	Glandular Fever No need to stay off but school should be informed	Hand, foot & mouth No need to stay off but school should be informed	Impetigo Until lesions are crusted & healed or 48 Hours after commencing antibiotics
Measles or German measles 4 days from onset of rash	Mumps 5 days after swelling begins	Scabies Until after 1 st treatment	Scarlet Fever 24 hours after antibiotics start	Slapped Cheek No need to stay off but school should be informed	Whooping Cough 48 hours after antibiotics start
Flu Until recovered	Head Lice No need to stay off but school should be informed	Threadworms No need to stay off but school should be informed	Tonsillitis No need to stay off but school should be informed		





- Assessment and Reporting
- Open Door Policy

Assessment and Reporting

- Progress in all subjects is regularly monitored and assessed.
- From Year 7 onwards parents receive full reports showing progress in all subjects.
- In Year 11 children sit full GCSE examinations. Some subjects also have course work elements and modular tests throughout Years 10 and 11.

Autumn Term

Parents are invited to a 'meet the teacher' evening to be introduced to any new teachers their child may have and also to hear about the planned programs of study for the year. This is an open forum where teachers are always happy to address any questions or concerns from parents.

Spring Term

Individual parents' evening sessions are held for parents to talk specifically with their child's teachers about progress and levels of achievement. Any queries or concerns should be discussed.

Spring/ Summer Term

Parents receive an annual report on their child's progress covering all aspects of the curriculum and containing test results where appropriate.

Open-Door Policy

No matter how trivial an issue may seem it is always worth dealing with before it grows into something bigger. It is for this reason that we have an Open-Door Policy and are happy to meet with any parent throughout the year. If you wish to speak with a class/form teacher, please call in or telephone to arrange a convenient time.

If you would rather speak with the Headteacher or Deputy Head Teacher, we are always happy to see you and will do so immediately if the situation is most urgent.

The School/Home partnership is vital and good communications are the key to making it successful.

Holidays

The Education Council is responsible for providing education for children between 5 and 16. It is the responsibility of the parents to ensure that their children receive full time education. Wherever possible, absence, including family holidays, during term time should be avoided. However, should this be unavoidable, please inform the Headteacher in writing.

Lateness

Punctuality is important for efficiency and also for developing good habits in our children. It is considered discourteous to arrive late to lessons. If a child is frequently late, they may be expected to make up the time.



Contact us

STATES OF GUERNSEY

Committee for Education, Sport & Culture
Sir Charles Frossard House
St Peter Port
Guernsey
GY1 1FH

Tel: 01481 224000

Fax: 01481 714475

Director of Education: Nick Hynes



St. Anne's School
ALDERNEY

ST. ANNE'S SCHOOL

St Anne's School
Alderney Channel
Islands GY9 3XP

Tel: 01481 822173

Fax: 01481 822174

E-Mail: sta.office@education.gg

Website: www.alderney.sch.gg

HEADTEACHER: Wendy Wilson

SCHOOL GOVERNANCE BOARD

Mr Ian Carter - Chair
Mrs Wendy Wilson – Headteacher
Mrs Beth Chapman- Community representative
Miss Joanne Allison – Staff Governor
Vacancy – Parent Governor
Education Department representative- TBC